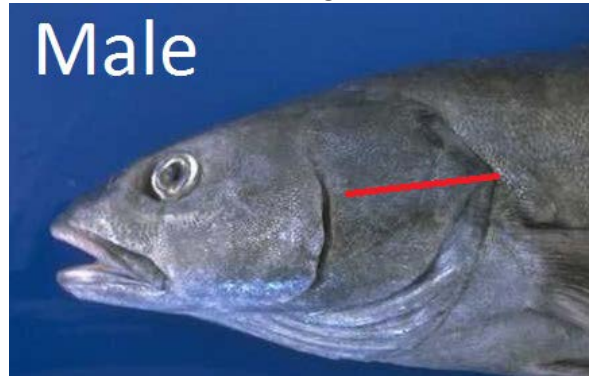


SABLEFISH – Sexing and Marking

MALES

Look for **lobes** that have an 'edge' to them. Due to the 'edge', they will not 'roll' easily in your fingers. The lobes will fuse together at the end closest to the head.

Mark with **one** cut on the gill cover



Sample photos for *color and shape reference*:

Juvenile: translucent-white



Developing: creamy-white



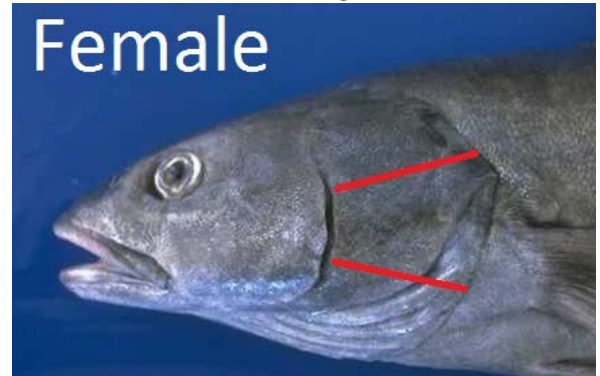
Post Spawning: brown or tan



FEMALES

Look for **tubes** that are oval in cross section and will 'roll' in your fingers.

Mark with **two** cuts on the gill cover



Sample photos for *color and shape reference*:

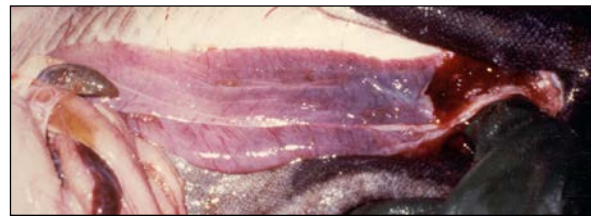
Juvenile: translucent pinky purple



Developing: creamy white, filled with eggs



Post Spawning: reddish- purple- brown, whitish sheen to the exterior surface



NOTE: If sex can NOT be determined, leave the fish head unmarked.

Juveniles can be tough to sex. If you are unsure do not mark the head